



**CASTLE WAY
ENERGY**

Castle Way Energy

EIA Scoping Report

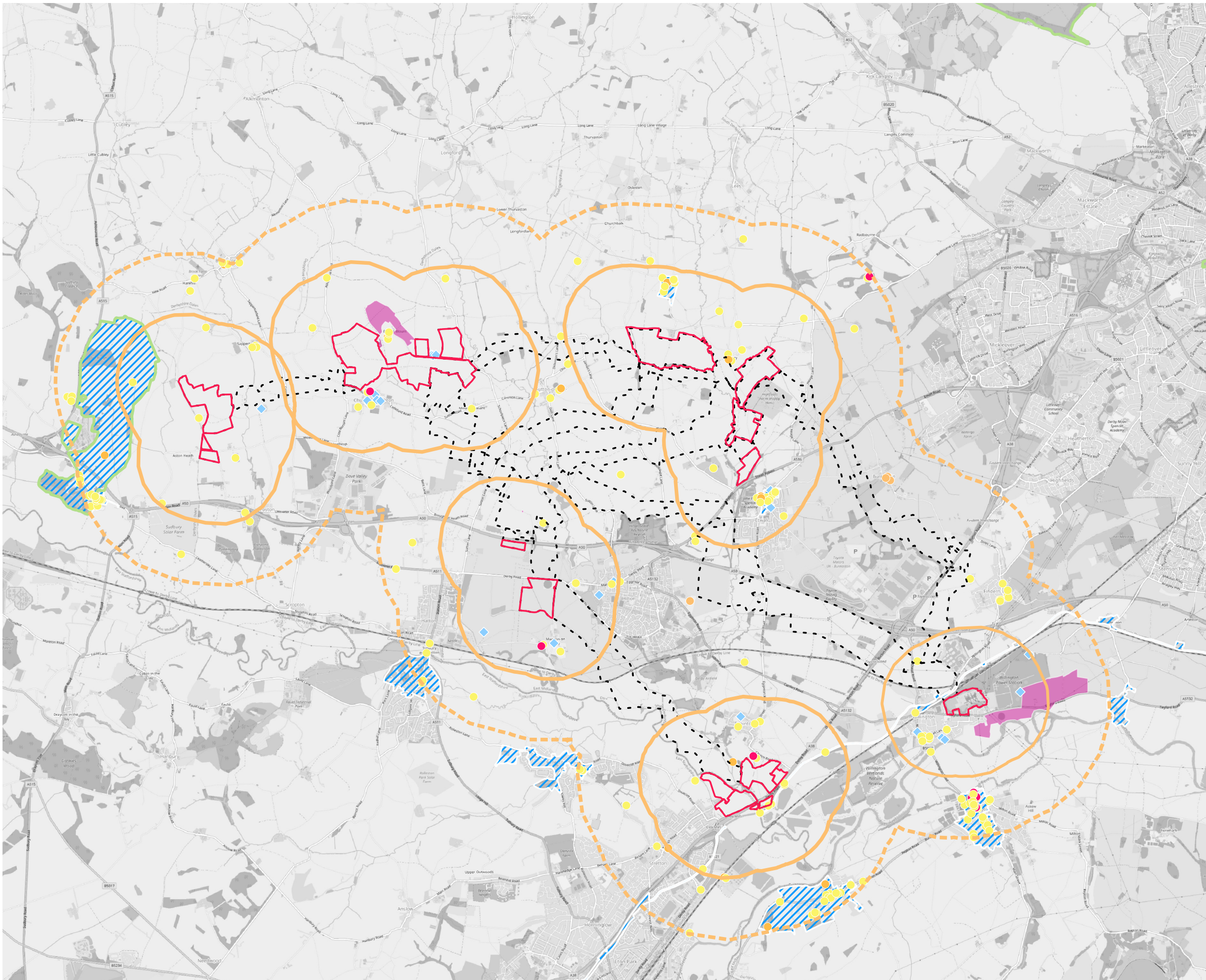
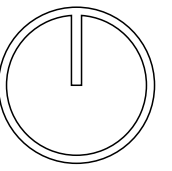
BSSL Derbyshire 1 Ltd

Appendix 1.1: Figures – Part 2

Planning Inspectorate Reference: EN0110037

June 2026





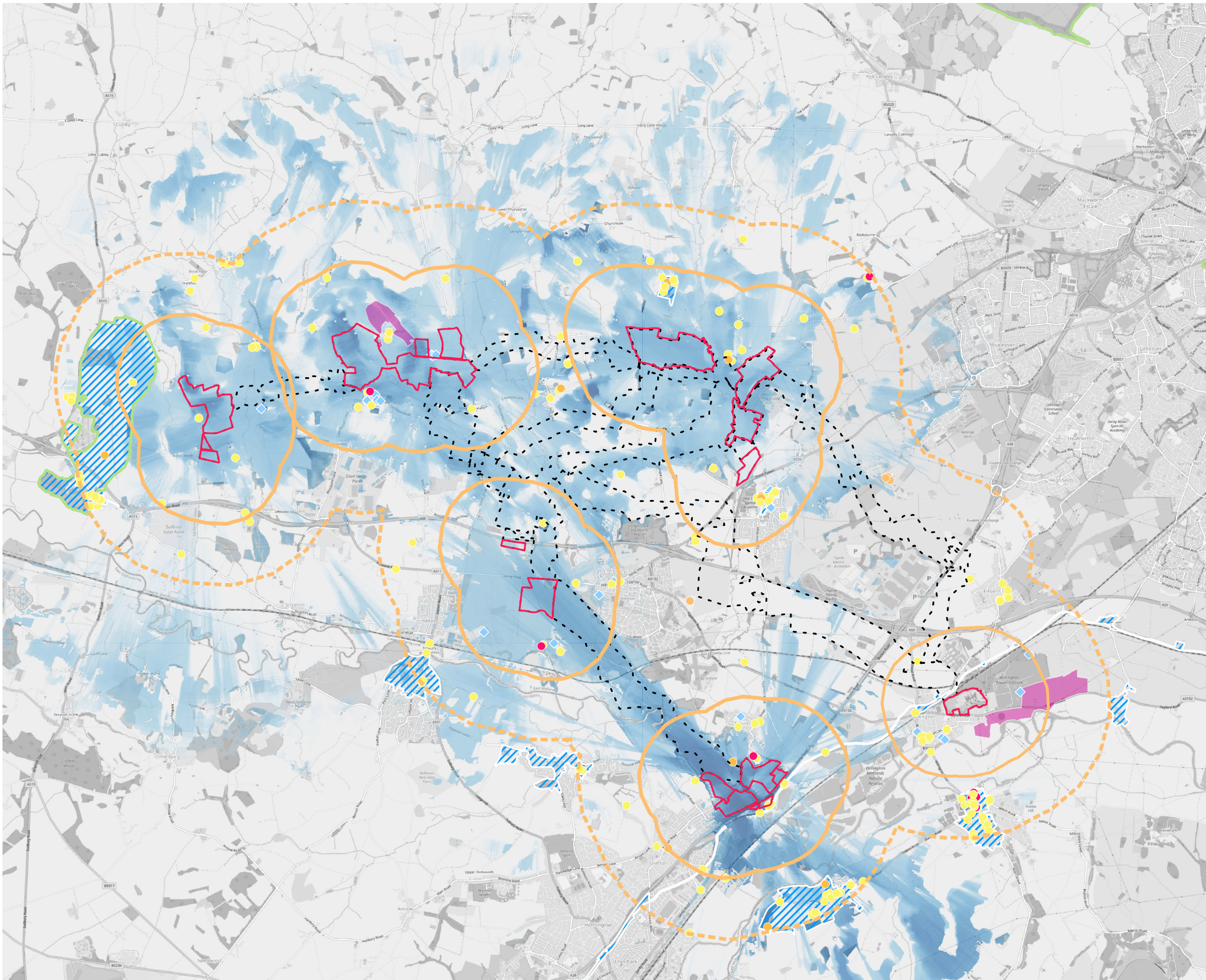
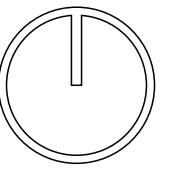
Legend

- draft Order Limits (Solar Development Sites)
- - - draft Order Limits (Cable Route Corridor Options)
- 1km
- 2km
- Heritage Assets
- Grade I
- Grade II+
- Grade II
- ◆ Non-Designated Heritage Assets
- Registered Parks and Gardens
- Conservations Areas
- Scheduled Monuments



| | |
|---------------|------------------------------------|
| PROJECT | Castle Way Energy |
| DRAWING TITLE | Figure 9.1: Heritage Asset Mapping |
| CLIENT | BSSL Derbyshire 1 Ltd |

| | | |
|------------|------------|-------------|
| DRAWN BY | PM | DRAWING NO. |
| CHECKED BY | GF | |
| DATE | 01.06.2026 | REV |
| | | - |



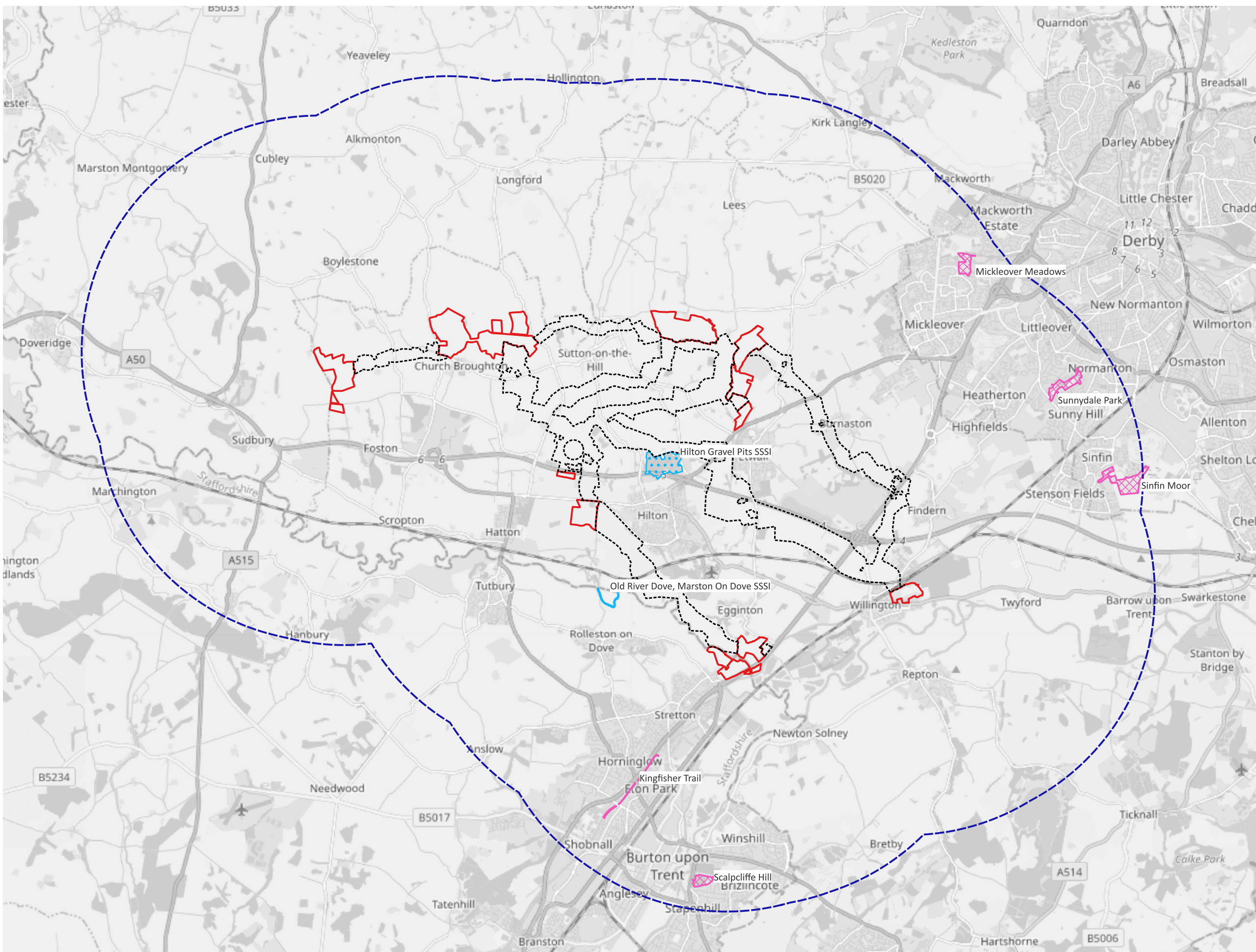
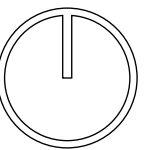
Legend

- draft Order Limits (Solar Development Sites)
- - - draft Order Limits (Cable Route Corridor Options)
- 1km
- 2km
- Heritage Assets
- Grade I
- Grade II*
- Grade II
- ◆ Non-Designated Heritage Assets
- Registered Parks and Gardens
- Conservations Areas
- Scheduled Monuments
- Zone of Theoretical Visibility (ZTV)
- Visibility (%)
- 86
- 0



| | |
|---------------|---|
| PROJECT | Castle Way Energy |
| DRAWING TITLE | Figure 9.2: Heritage Asset Mapping and Zone of Theoretical Visibility (ZTV) |
| CLIENT | BSSL Derbyshire 1 Ltd |

| | | |
|------------|------------|-------------|
| DRAWN BY | PM | DRAWING NO. |
| CHECKED BY | GF | |
| DATE | 01.06.2026 | REV |
| | | - |



draft Order Limits

Solar Development Sites

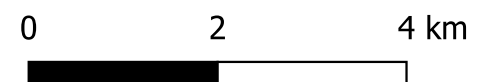
Cable Route Corridor Options

5km Site Buffer

Statutory Designated Sites

Site of Special Scientific Interest (SSSI)

Local Nature Reserve (LNR)

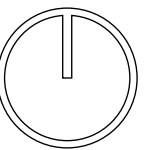


Data Sources:
Local Nature Reserve; Site of Special Scientific Interest:
DEFRA – under Open Government Licence

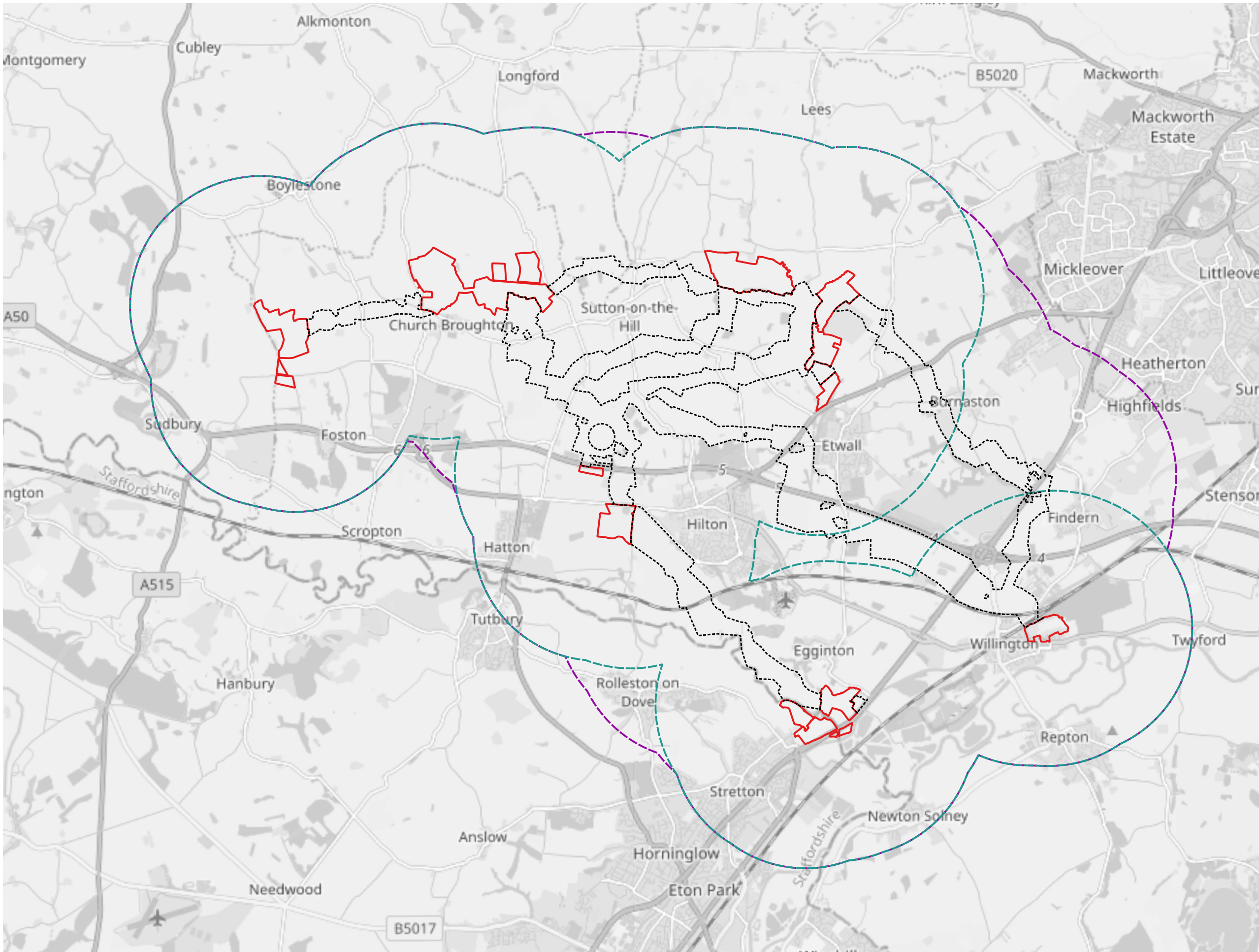
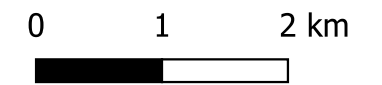


| | |
|---------------|---|
| PROJECT | Castle Way Energy |
| DRAWING TITLE | Figure 11.1: Statutory designated Sties |
| CLIENT | BSSL Derbyshire 1 Ltd |

| | | |
|------------|----|-------------|
| DRAWN BY | GD | DRAWING NO. |
| CHECKED BY | JS | 11.1 |
| DATE | | REV |
| 10/06/2026 | | - |






- draft Order Limits
- Solar Development Sites
 - Cable Route Corridor Options
 - Desk Study Search Area
 - 2km Site and Cable Corridor Buffer

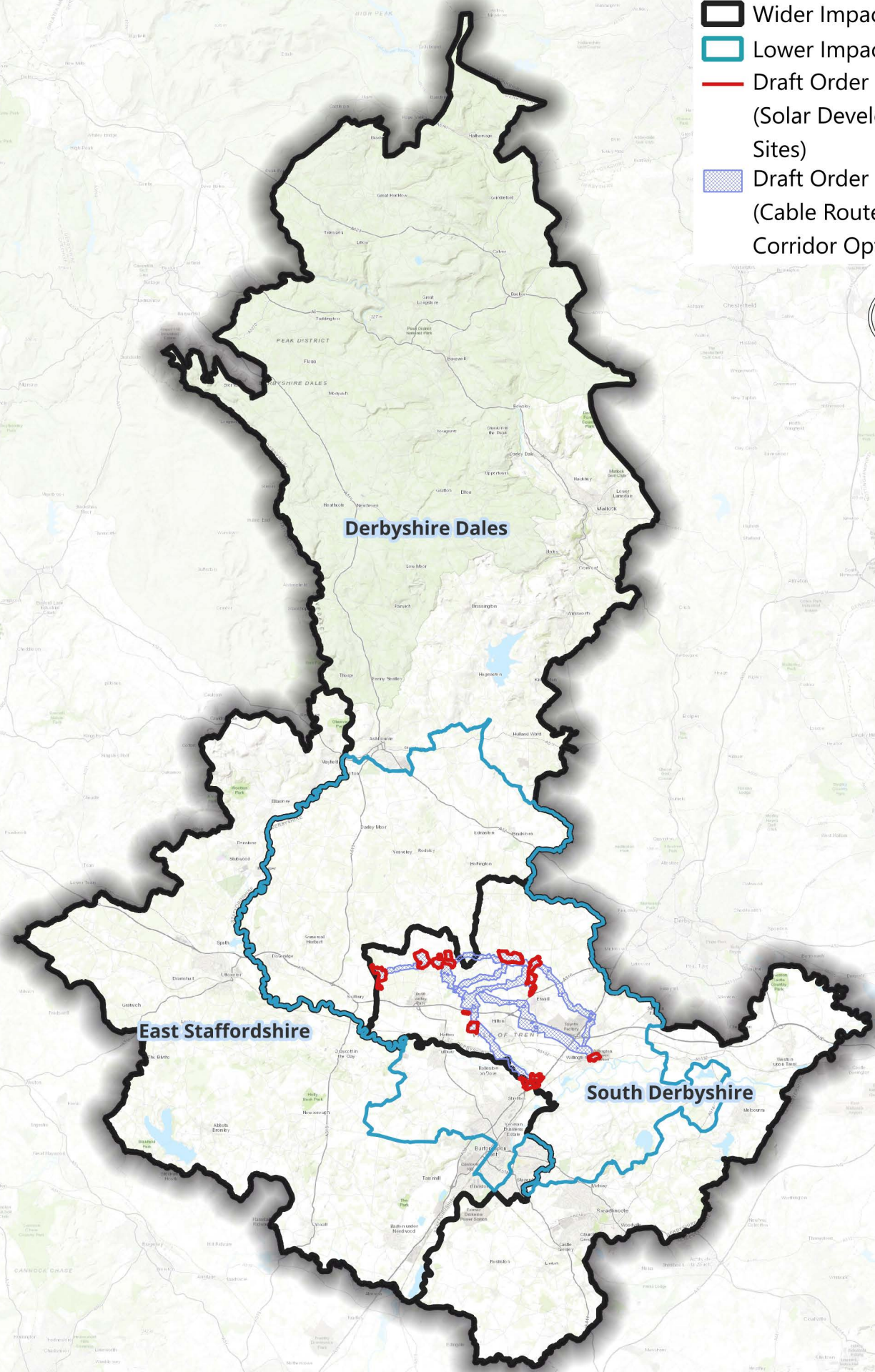


| | |
|---------------|-------------------------------------|
| PROJECT | Castle Way Energy |
| DRAWING TITLE | Figure 11.2: Desk Study Search Area |
| CLIENT | BSSL Derbyshire 1 Ltd |

| | | |
|------------|----|-------------|
| DRAWN BY | GD | DRAWING NO. |
| CHECKED BY | JS | 11.2 |
| DATE | | REV |
| 10/06/2026 | | - |



-  Wider Impact Area
-  Lower Impact Area
-  Draft Order Limits (Solar Development Sites)
-  Draft Order Limits (Cable Route Corridor Options)



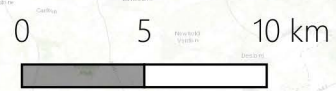
Derbyshire Dales

East Staffordshire




South Derbyshire

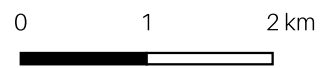
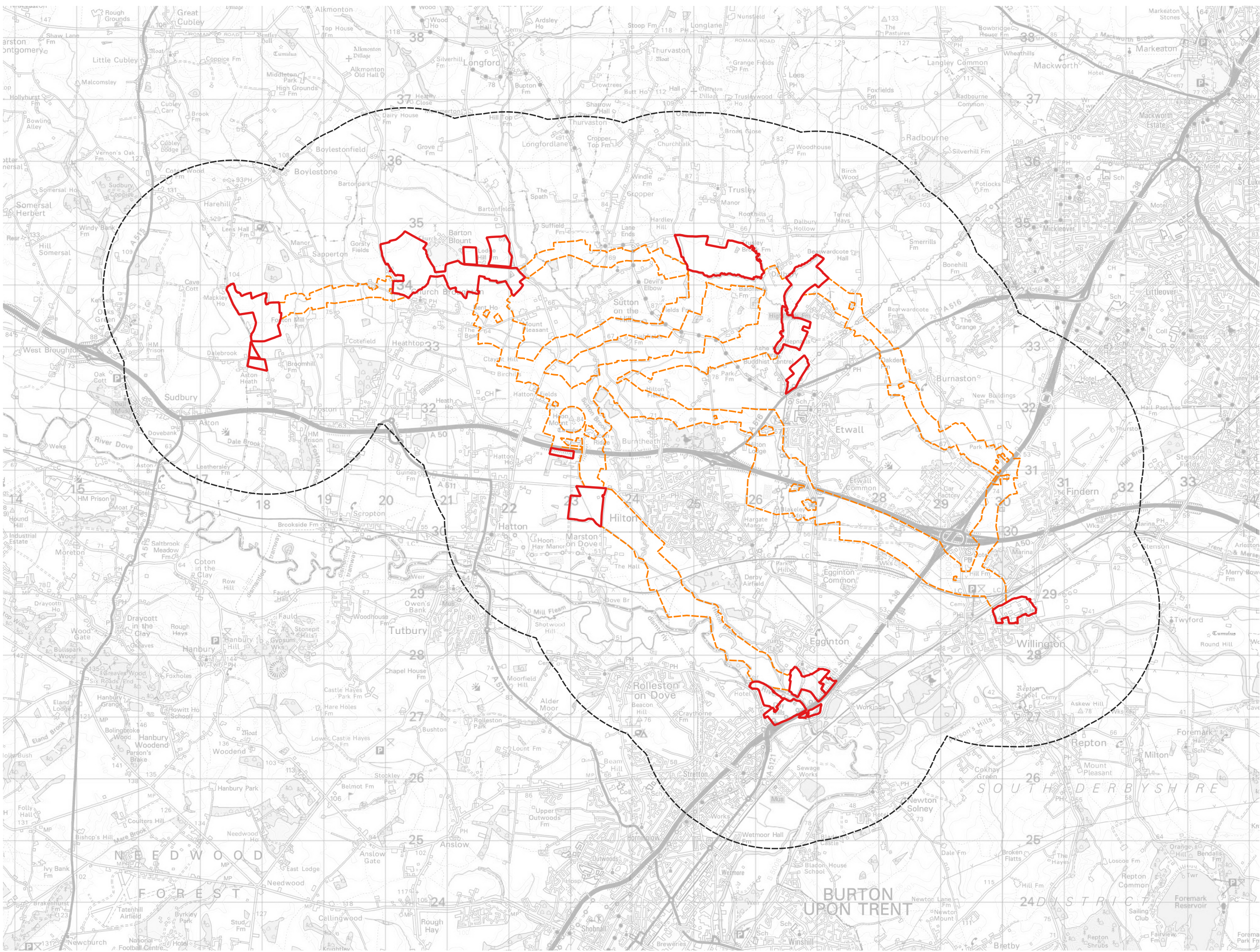


PROJECT: CASTLE WAY ENERGY
 DRAWING TITLE: FIGURE 14.1 - HEALTH STUDY AREA
 CLIENT: BSSL DERBYSHIRE 1 LTD








-  draft Order Limits (Solar Development Sites)
-  draft Order Limits (Cable Route Corridor Options)
-  LVIA Study Area

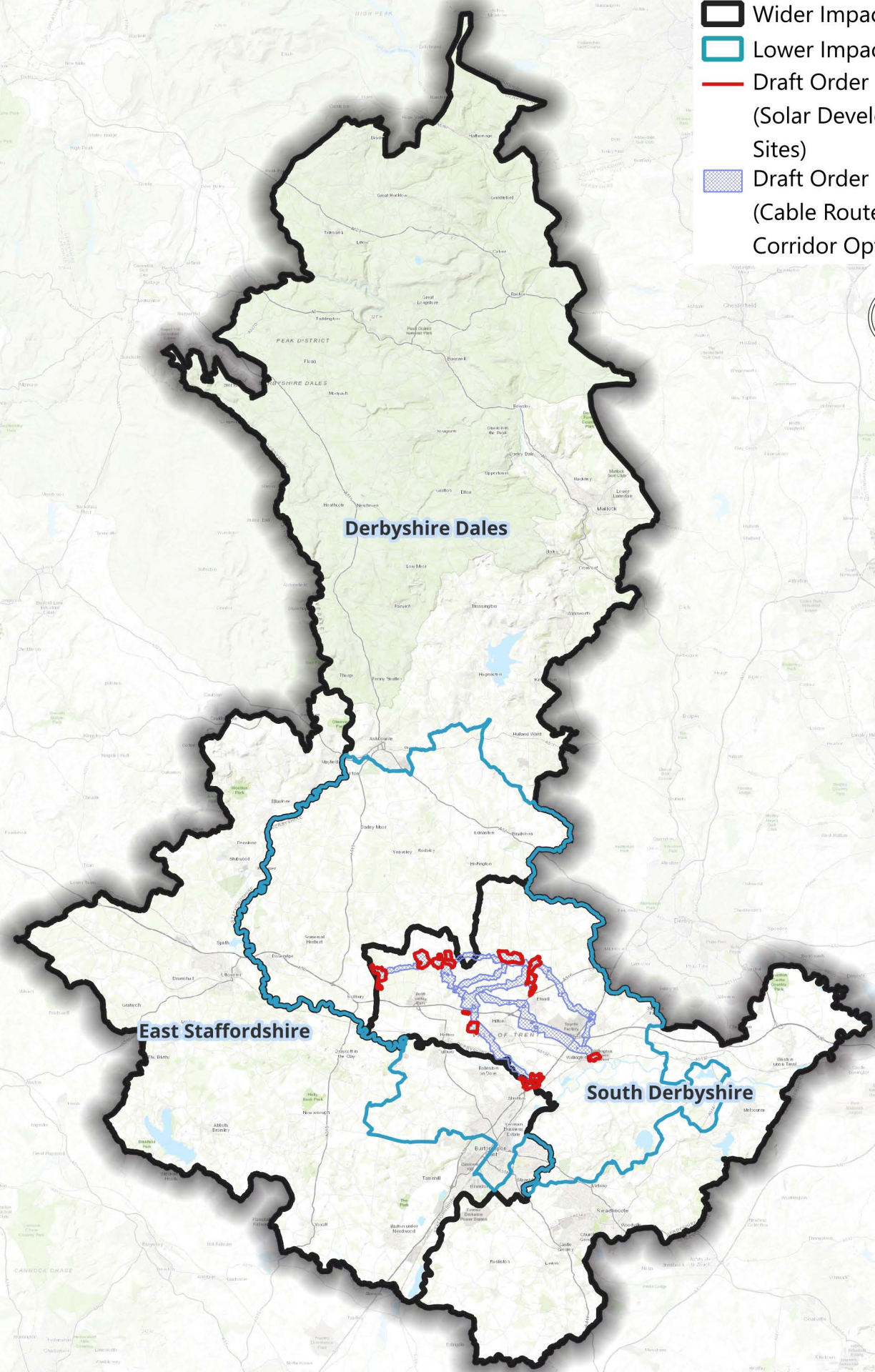


| | |
|---------------|------------------------------|
| PROJECT | Castle Way Energy |
| DRAWING TITLE | Figure 15.1: LVIA Study Area |
| CLIENT | BSSL Derbyshire 1 Ltd |

| | | | |
|------------|------------|-------------|------|
| DRAWN BY | EJ | DRAWING NO. | |
| CHECKED BY | BG | | 15.1 |
| DATE | | REV | |
| | 10.06.2026 | | 01 |



-  Wider Impact Area
-  Lower Impact Area
-  Draft Order Limits (Solar Development Sites)
-  Draft Order Limits (Cable Route Corridor Options)



PROJECT: CASTLE WAY ENERGY
 DRAWING TITLE: FIGURE 17.1 - SOCIO-ECONOMIC STUDY AREA
 CLIENT: BSSL DERBYSHIRE 1 LTD

